

## Szafa RACK 19" 12U, 450mm

### RACK Cabinet 19" 12U, 450mm



SERIA A

19"  
RACK

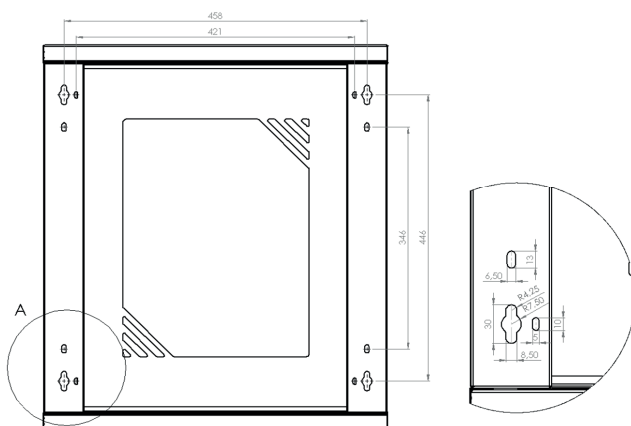
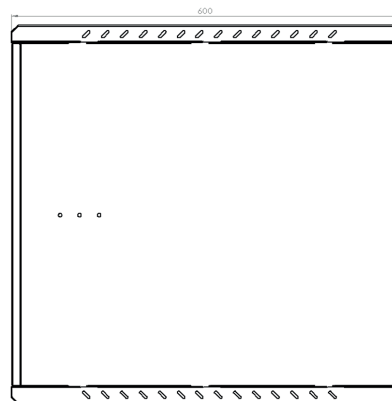
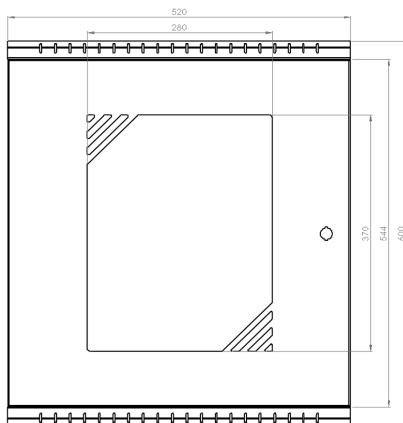
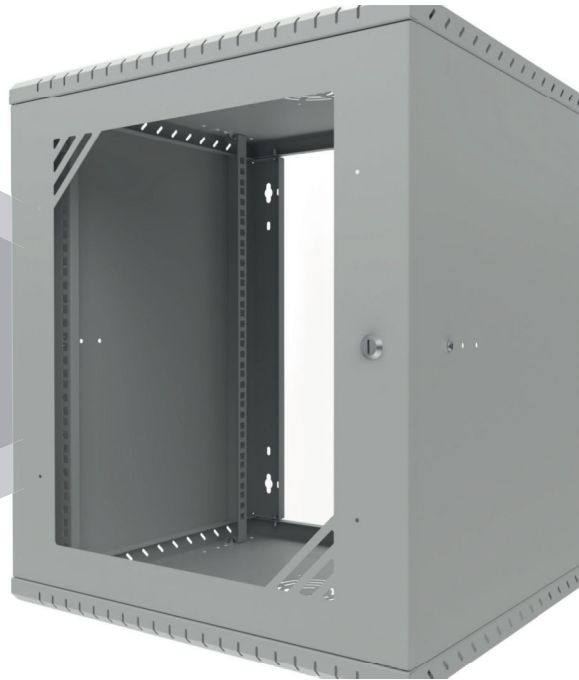
12U

#### SPECYFIKACJA TECHNICZNA TECHNICAL PARAMETERS

|  |   |
|--|---|
| <b>KOLOR</b><br>COLOUR   | SZARY (RAL 3075)<br>BLACK (RAL 9005)  |
| <b>SYMBOL</b><br>NAME  | RC19-12U-450GG  |
| <b>EAN</b><br>EAN  | 5903351260862   |
| <b>PRODUCENT</b><br>PRODUCER                                     | STALFLEX SP. Z O.O.   |
| <b>MATERIAŁ</b><br>MATERIAL                                      | BLACHA ZIMNOWALCOWANA DC01 MALOWANA PROSZKOWO<br>SHEET METAL DC01 POWDER COATED |
| <b>GRUBOŚĆ BLACHY SZAFY RACK</b><br>SHEET THICKNESS RACK CABINET | 0,8 MM  |
| <b>GRUBOŚĆ BALCHY SZYN RACK</b><br>SHEET THICKNESS RACK RAILS    | 0,8 MM  |
| <b>WYMIARY ZEWNĘTRZNE</b><br>EXTERNAL DIMENSIONS                 | SZ=520 G=450 W=600 [MM]<br>W=520 D=450 H=600 [MM]                               |
| <b>WYMIARY OPAKOWANIA</b><br>DIMENSIONS OF THE PACKAGE           | SZ=595 G=555 W=120 [MM]<br>W=595 D=555 H=120 [MM]                               |
| <b>WAGA NETTO</b><br>NET WEIGHT                                  | 11,6KG  |
| <b>WAGA BRUTTO</b><br>GROSS WEIGHT                               | 12,1KG  |
| <b>OBCIĄŻENIE</b><br>LOADING                                     | 55KG  |
| <b>ZASTOSOWANIE</b><br>USE                                       | DO WEWNĄTRZ<br>INDOOR   |
| <b>WYPOSAŻENIE</b><br>EQUIPMENT                                  | ZESTAW MONTAŻOWY<br>ASSEMBLY KIT  |

**Szafa RACK 19" 12U, 450mm**

**RACK Cabinet 19" 12U, 450mm**



WYMIARY PODANE W TOLERANCJI +/- 4MM

DIMENSIONS GIVEN IN TOLERANCE OF +/- 4MM